

TOWNHOME

PLAN
TH20

1,655 SQ.FT.

3 BED

2.5 BATH

FISH CREEK
EXCHANGE



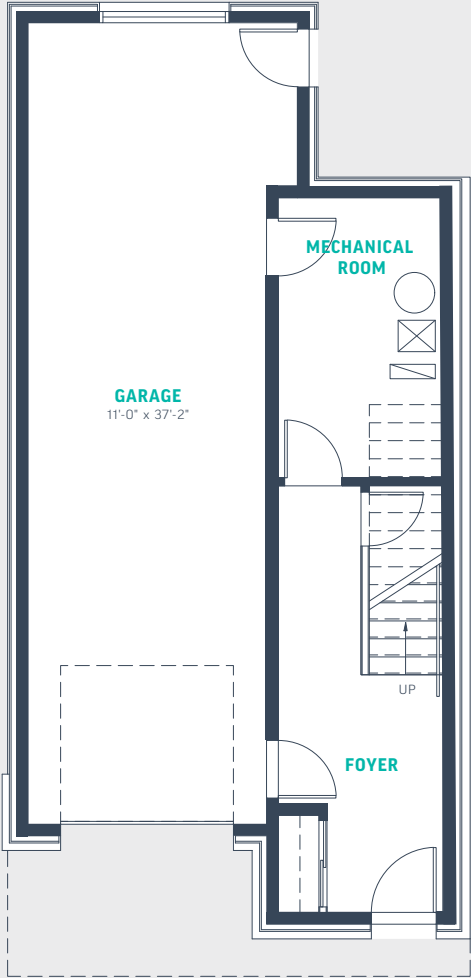
TOWNHOME
Plan TH20

1,655 SQ.FT.
3 STOREY
3 BED
2.5 BATH

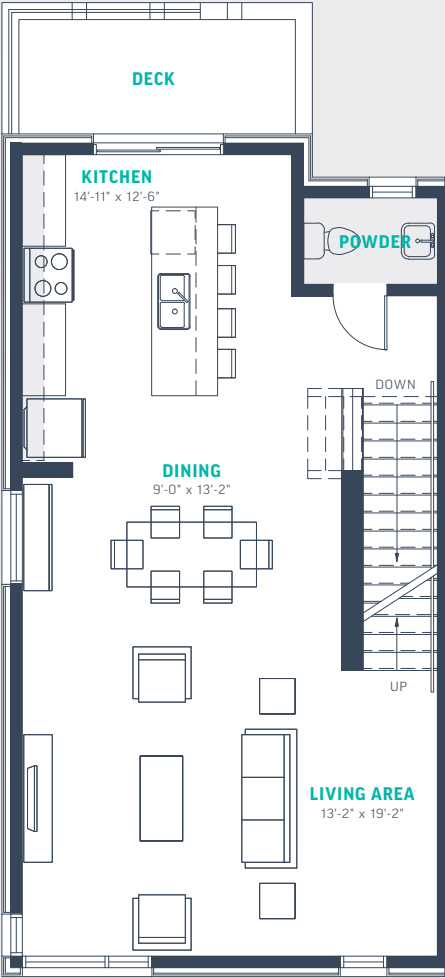
This expansive 3-bedroom design includes a private deck off the kitchen as well as an option for 2-bedroom layout with a flex room.

- Central dining space between kitchen and living area
- Desirable end-unit orientation
- Convenient upper floor laundry
- Tandem double garage

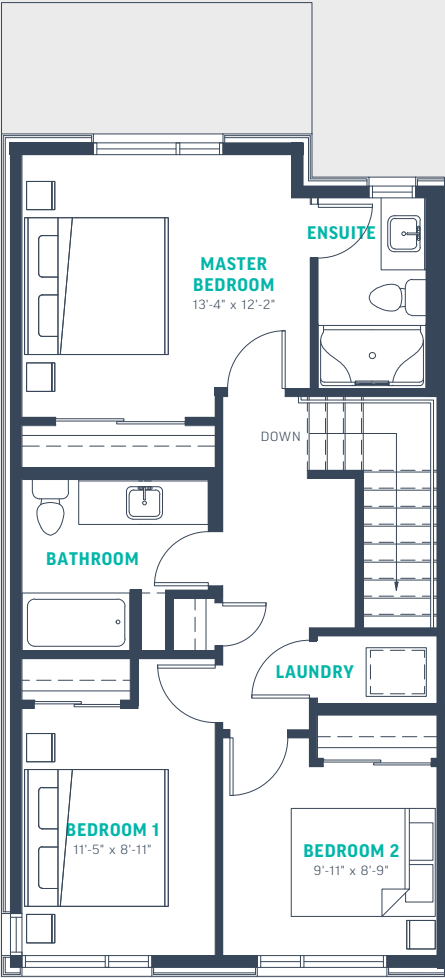
With ample storage space throughout, all the features you want are right here at home.



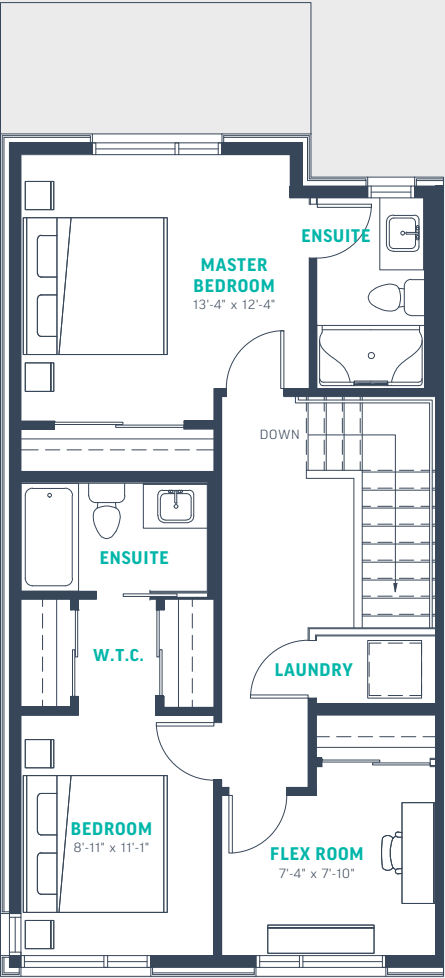
145 SQ.FT.
ENTRANCE



755 SQ.FT.
MAIN FLOOR



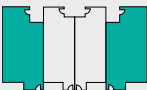
755 SQ.FT.
UPPER FLOOR



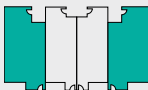
755 SQ.FT.
UPPER FLOOR OPTION



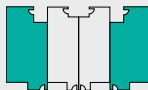
North



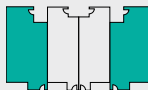
BLOCK 3



BLOCK 4



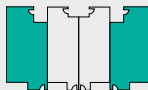
BLOCK 5



BLOCK 6



BLOCK 7



BLOCK 8

*The developer reserves the right to change plans, specifications, pricing, promotions, incentives, features, elevations, floor plans, designs, materials, amenities and dimensions without notice in its sole discretion. All renderings, colour schemes, floor plans, maps and displays are artists' conceptions and are not intended to be an actual depiction of the home or its surroundings. Homeowner association fees may be required. E&OE

FISH CREEK

EXCHANGE



GRAYWOOD
DEVELOPMENTS

FishCreekExchange.ca