

TOWNHOME

---

PLAN  
**TH25**

---

1,623 SQ.FT.

3 BED

2.5 BATH

FISH CREEK  
EXCHANGE



TOWNHOME

Plan TH25

1,623 SQ.FT.  
3 STOREY

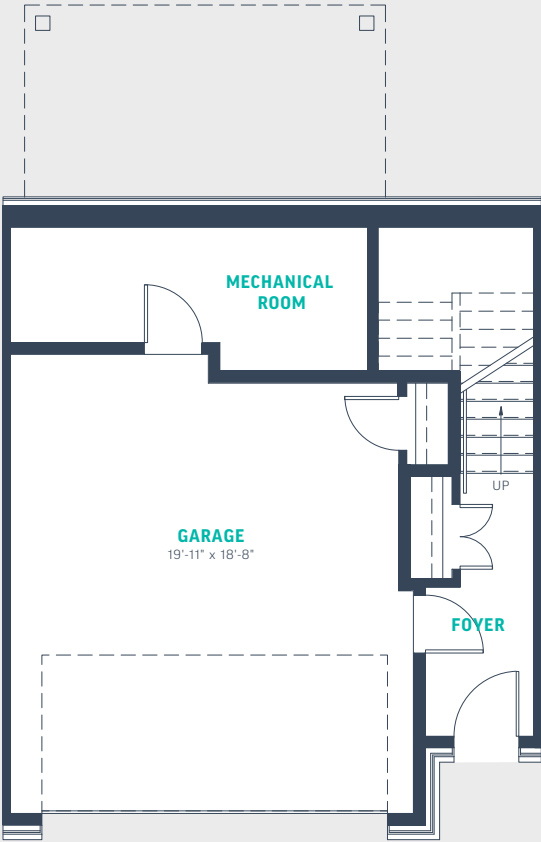
3 BED  
2.5 BATH

END UNIT AVAILABLE AT 1,634 SQ.FT.

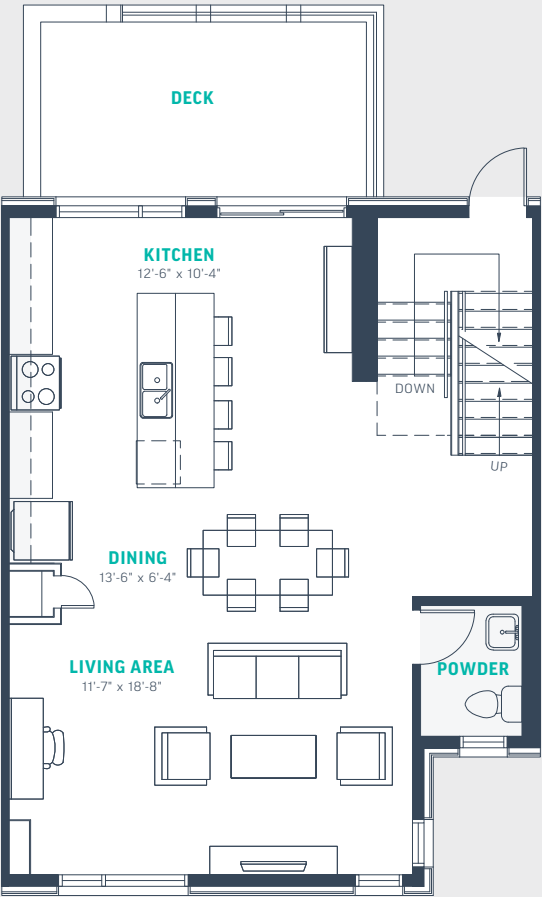
This open-concept design features an ideal layout for entertaining, with a convenient kitchen island, central dining space and adjoining living area.

- Private screened deck off kitchen
- Spacious master bedroom with ensuite
- Convenient upper floor laundry
- Double attached garage

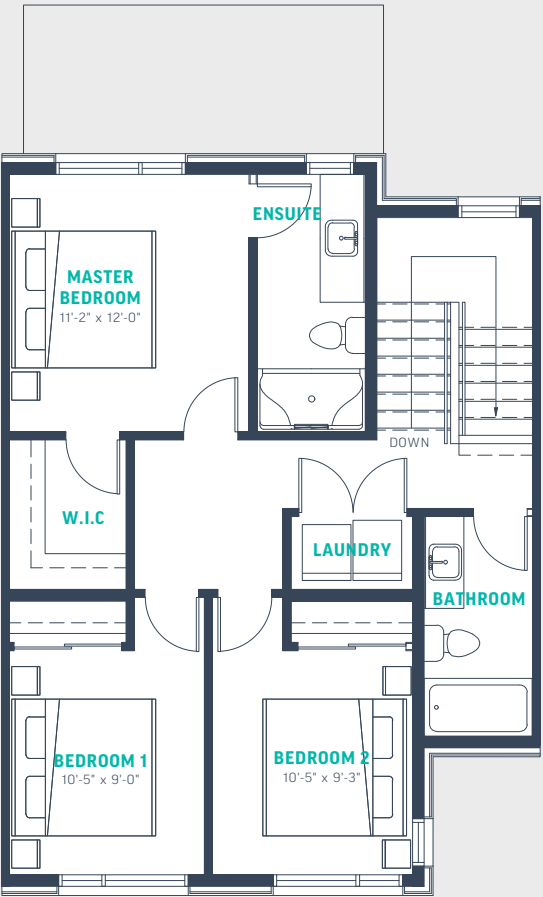
Choose from a full range of designer upgrade options, and make this spacious home uniquely your own.



83 SQ.FT.  
ENTRANCE



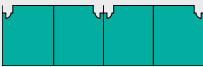
753 SQ.FT.  
MAIN FLOOR



787 SQ.FT.  
UPPER FLOOR



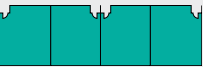
North



BLOCK 9



BLOCK 10



BLOCK 11

\*The developer reserves the right to change plans, specifications, pricing, promotions, incentives, features, elevations, floor plans, designs, materials, amenities and dimensions without notice in its sole discretion. All renderings, colour schemes, floor plans, maps and displays are artists' conceptions and are not intended to be an actual depiction of the home or its surroundings. Homeowner association fees may be required. E&OE

# FISH CREEK

EXCHANGE



GRAYWOOD  
DEVELOPMENTS

FishCreekExchange.ca